

[587]

UNIVERSITY OF KANSAS PUBLICATIONS
MUSEUM OF NATURAL HISTORY

Vol. 10, No. 9, pp. 587-598, 2 figs.

· May 2, 1960 ·

**A New Subspecies of Lizard,
Cnemidophorus sacki, from
Michoacán, México**

BY

WILLIAM E. DUELLMAN

**UNIVERSITY OF KANSAS
LAWRENCE
1960**

[588]

**UNIVERSITY OF KANSAS PUBLICATIONS, MUSEUM OF NATURAL
HISTORY
Editors: E. Raymond Hall, Chairman, Henry S. Fitch,
Robert W. Wilson**

**Volume 10, No. 9, pp. 587-598, 2 figs.
Published May 2, 1960**

**UNIVERSITY OF KANSAS
Lawrence, Kansas**

PRINTED IN
THE STATE PRINTING PLANT
TOPEKA, KANSAS

1960



28-2494

[589]

**A New Subspecies of Lizard,
Cnemidophorus sacki, from Michoacán, México**

BY

WILLIAM E. DUELLMAN

The systematic status of the populations of lizards assignable to *Cnemidophorus sacki* in western México (Sonora southward to Jalisco) has been reviewed in detail by Zweifel (1959, Bull. Amer. Mus. Nat. Hist, 117 (2):57-116), who stated that the use of the specific name *sacki* for the western populations rests upon a reasonable, but as yet unproved, assumption that intergradation occurs. Although Zweifel examined specimens of the nominal subspecies from the upper Balsas Basin, he did not study specimens from the intervening area—the Tepalcatepec Valley in Michoacán.

Field studies and the examination of large series of preserved specimens of *Cnemidophorus* from the [Tepalcatepec](#) Valley show the presence of *Cnemidophorus sacki* in the region between the ranges of *C. sacki sacki* in the upper Balsas Basin and *C. sacki occidentalis* in Jalisco and southern Nayarit. Furthermore, the populations of *sacki* inhabiting the Tepalcatepec Valley have characters of scutellation and coloration that distinguish them from other described subspecies of *sacki*. In recognition of the important contributions to the systematics of the genus *Cnemidophorus* made by Dr. Richard G. Zweifel, I propose that the subspecies of *Cnemidophorus sacki* in the Tepalcatepec Valley be named as follows:

***Cnemidophorus sacki zweifeli* new subspecies**

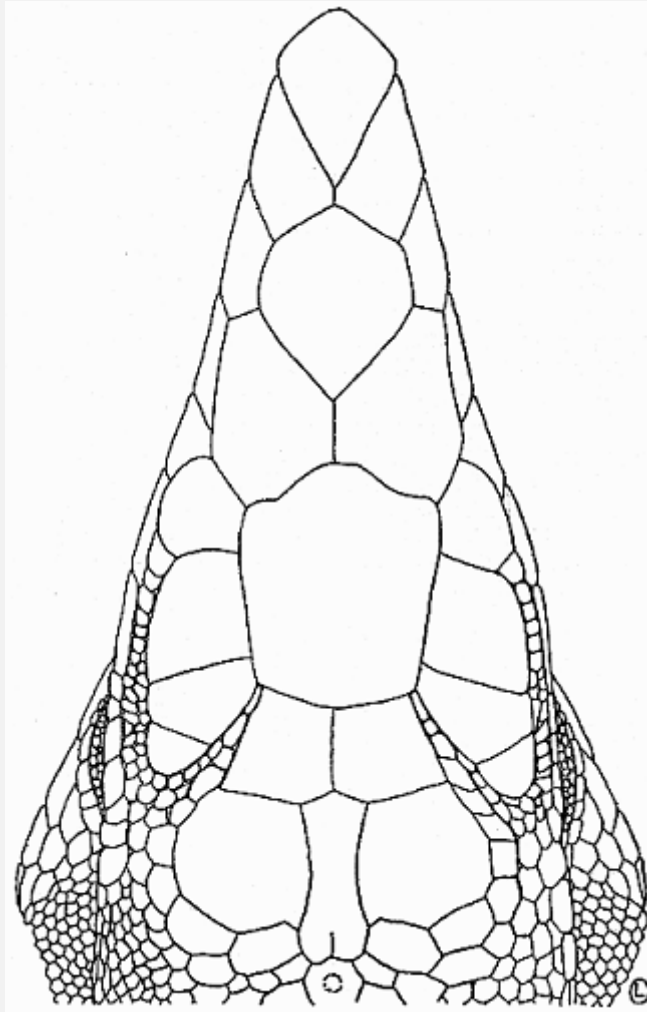
Holotype.—University of Michigan Museum of Zoology No. 119542, from Capirio, Michoacán, México (185 meters), an adult male, one of a series collected on June 13, 1958, by William E. Duellman, Jerome B. Tulecke, and John Wellman. Original number WED 12310.

Paratopotypes.—UMMZ Nos. 119536-119541 and 119543-119550.

Diagnosis.—A race of *Cnemidophorus sacki* characterized by large size (more than 130 mm. snout-vent length in males), approximately 106 dorsal granules around the midbody, about 41 femoral pores, and a dorsal color-pattern in adult males consisting of lateral and dorsolateral rows of spots, paravertebral rows fused with middorsal light green area at least anteriorly, and pink throat having a median light blue spot or transverse band.

Description of Holotype.—Snout-vent length, 128 mm.; tail length, 252 mm.; tail/body ratio, 1.97; scutellation typical of *sacki*—four supraoculars, enlarged postantibrachials, and enlarged mesoptichials; 107 granules around midbody (excluding enlarged ventrals); 45 femoral pores; three enlarged preanal scales; supraorbital semicircle-series extending anteriorly to posterior edge of frontal ([Fig. 1](#)).

[590]



[Click on image to view larger sized version.](#)

FIG. 1. Top view of the head of the holotype of *Cnemidophorus sacki zweifeli* (UMMZ 119542) showing scutellation.

Top of head and nape dusty brown; tip of rostral and lateral edges of superciliaries dark cream-color; upper labials and sides of head anterior to eyes cream-color, mottled with blue; lower labials and postocular region pale blue; mental, postmental, and sublabials cream-color. Upper surfaces of forelimbs dull bluish gray, spotted with pale greenish yellow; dorsal surfaces of proximal one-fourth of tail light brownish gray turning to pale orange-brown posteriorly; lateral surfaces of tail bluish gray anteriorly and creamy brown posteriorly. Nuchal region light bluish gray; flanks dark gray; dorsal ground-color dark brown, somewhat paler posteriorly. Body having a row of cream-colored spots in place of a lateral stripe, and another row in place of dorsolateral stripe; dorsally, large diffuse tan or light green spots partially fused and tending to form irregular transverse markings. Chin to posterior end of sublabials pale pink, bordered posteriorly by bluish white area, and then pink. Mesoptychials, under surfaces of hind limbs, and belly cream-colored; anterior edges of belly scales dark blue; lateral two rows of ventrals on posterior two-thirds of body dark blue having light blue or cream-colored spots. Under surfaces of forelimbs bluish cream; ventral surface of tail cream-colored.

Variation in Size and Scutellation.—The largest male has a snout-vent length of 132 mm., the largest female, 114 mm., and the smallest juvenile, 34 mm. The number of dorsal granules at the midbody varies from 91 to 117 (106.2 ± 0.43); the ratio of the number of granules between the paravertebral stripes to the number of granules around the body (PV/GAB) varies from 0.064 to 0.157 (0.097 ± 0.007); the number of femoral pores varies from 32 to 49 (41.1 ± 0.20). Usually there are only three enlarged preanals, but 18 specimens have a somewhat enlarged scale anterior to the normal complement of three. In 15 specimens the supraorbital semicircle-series terminate short of the posterior edge of the frontal; in the others the series reach the frontal.

Variation in Coloration.—The coloration of juveniles and subadults varies little; large adults vary considerably especially in the amount of diffusion of the light green middorsal area. In some individuals the vertebral pale area does not include the paravertebral spots; in other individuals the pale area includes not only the paravertebral rows, but, at least anteriorly, the dorsolateral rows. In large males of about equal size (and collected at the same time) there is considerable variation in the amount of blue on the belly. In a few of the males the belly is white with only the anterior edge of each scale blue; in some only the lateral rows of ventrals on the posterior two-thirds of the body are blue; in others all of the posterior two-thirds of the belly is blue.

Ontogenetic Change in Color Pattern.—The metamorphosis of color pattern in *Cnemidophorus sacki zweifeli* results in the dorsal ground-color becoming paler with age, the replacement of the stripes by spots, and finally in large males the suffusion of these spots.

A single hatchling (UMMZ 114732) is available; this specimen has a prominent umbilical scar and a snout-vent length of 34 mm. The top of the head is olive brown; the dorsal surfaces of the limbs are dark brown with cream mottling; the dorsal ground-color is brownish black; this is paler on the lower flanks. The lateral and dorsolateral stripes are cream-colored; the paravertebral stripes are [592]white. There is a faint, diffuse vertebral stripe anteriorly ([Fig. 2 A](#)). The throat and undersides of the limbs and tail are cream-colored; the belly is bluish white. In life the stripes were pale yellowish green, and the tip of the tail was pink.

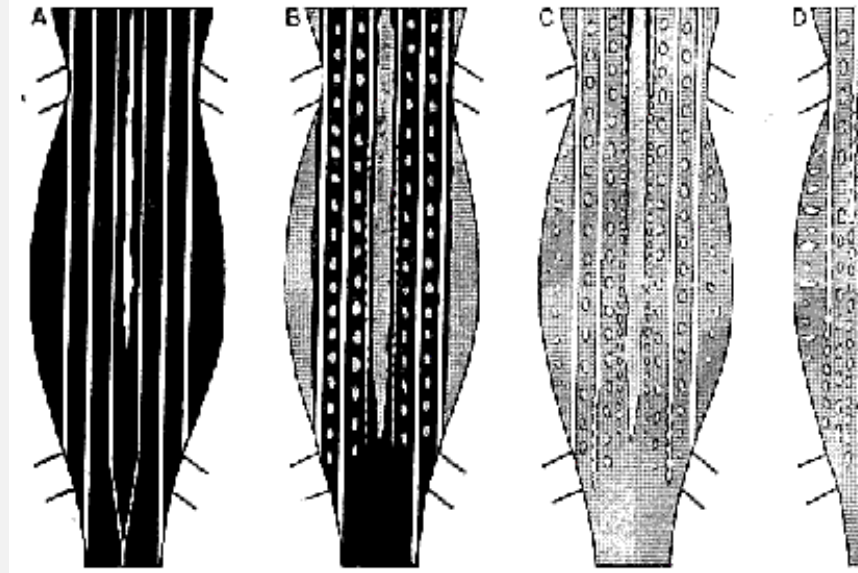
In larger individuals the dorsal [ground-color](#) is dark brown; the lower flanks are grayish tan. Light brown diffuse spots are present in the lateral and dorsolateral dark fields. The tan vertebral stripe is diffuse and nearly fills the paravertebral dark fields; the paravertebral stripes are faint posteriorly; throughout their length they are scalloped—the beginning of their fragmentation into spots ([Fig. 2 B](#)).

In subadults (± 80 mm. snout-vent length) the paravertebral stripes are fragmented into spots posteriorly. Also, the dorsolateral stripes in some individuals are fragmented posteriorly. The dorsolateral dark fields are somewhat paler than the lateral dark fields. Cream-colored spots are present on the flanks. The mottling on the thighs tends towards the formation of light spots ([Fig. 2 C](#)).

In small adults (± 100 mm. snout-vent length) the paravertebral stripes are entirely fragmented into spots. The lateral and dorsolateral stripes are broken into spots posteriorly. The middorsal pale area (formed by the suffusion of the vertebral stripe) and paravertebral and dorsolateral rows of spots are pale green. The cream-colored spots on the flanks are expanded to form vertical bars ([Fig. 2 D](#)).

Large adult males (± 120 mm. snout-vent length) have all of the stripes fragmented into spots. The diffuse middorsal area is expanded and encloses the paravertebral rows of spots. The pale spots present in the dark fields in smaller individuals are either absent or fused with spots resulting from the fragmentation of the stripes ([Fig. 2 E](#)).

Sexual dimorphism.—Males attain a larger size (known maximum snout-vent length of 132 mm., as compared with 114 mm. in females). Males have larger but not more numerous, femoral pores, blue bellies, and pink and blue throats, whereas females are unicolor creamy white ventrally. The more nearly complete metamorphosis of color pattern exhibited by adult males probably is correlated with their large adult size. Large females retain complete lateral and dorsolateral stripes. The jowls of breeding males are swollen.



[Click on image to view larger sized version](#)

FIG. 2. Diagrammatic representation of ontogenetic change in color pattern in *Cnemidophorus sacki zweifeli*: A—hatchling, 34 mm. snout-vent length; B—juvenile, 55 mm. snout-vent length; C—subadult male, 80 mm. snout-vent length; D—small adult male, 100 mm. snout-vent length; E—large adult male, 120 mm. snout-vent length.

[594]

Geographic variation.—No noticeable geographic variation in this subspecies is evident in the series from the Tepalcatepec Valley. However, lizards from eastern Michoacán (Chinapa, 6 km. N of Tafetan, 6 km. S of Tzitzio, and 19 km. S of Tzitzio) differ slightly from those from the Tepalcatepec Valley; the eastern specimens have fewer dorsal granules and femoral pores, and a higher ratio of dorsal granules between the paravertebral stripes to the number of granules around the body (see Tables 1-3). No large adult males are present in the eastern series; the subadults and small adult males have color patterns like lizards of similar size from the Tepalcatepec Valley. The largest male from the east has a snout-vent length of 110 mm., rows of pale spots, and no trace of brown and tan cross-bars. Specimens of *Cnemidophorus sacki sacki* of equal size from Guerrero, Morelos, and Puebla in the upper Balsas Basin have a tan dorsum with dark brown cross-bars. The localities in eastern Michoacán are intermediate geographically between the Tepalcatepec Valley and the known range of the nominal subspecies in the upper Balsas Basin. In characters of scutellation specimens from the

east are intermediate between *C. sacki sacki* and *C. sacki zweifeli* in the Tepalcatepec Valley. However, in coloration the lizards from the east are like those from the Tepalcatepec Valley, but differ distinctly from the nominal subspecies. Therefore, the eastern series is referred to the subspecies *C. sacki zweifeli*.

Comparisons.—Four other species of *Cnemidophorus* occur in the Tepalcatepec Valley with *Cnemidophorus sacki zweifeli*. Of these, *C. calidipes* has a maximum snout-vent length of 79 mm., 66 to 86 dorsal granules, and a light brown dorsum with pale blue spots and vertical bars; *C. communis communis* has a maximum snout-vent length of 135 mm., 105 to 144 dorsal granules, and a greenish tan dorsum with yellow spots; *C. deppei infernalis* has a maximum snout-vent length of 84 mm., 91 to 120 dorsal granules, and a striped pattern throughout life; and *C. lineatissimus exoristus* has a maximum snout-vent length of 98 mm., 108 to 135 dorsal granules, and a middorsal yellow stripe and vertical bars on the flanks. Both *calidipes* and *communis* are like *sacki* in possessing four enlarged supraoculars and enlarged postantebrachials, whereas *deppei* and *lineatissimus* have three enlarged supraoculars and granular postantebrachials. Juveniles of *calidipes* and *sacki* are alike in coloration but different in the extent of the supraorbital semicircle-series. In *calidipes* the supraorbital semicircle-series usually are complete, whereas in *sacki* the series never extended anterior to the posterior edge of the frontal.

[595]

TABLE 1.—VARIATION IN THE NUMBER OF DORSAL GRANULES
IN THREE SUBSPECIES OF CNEMIDOPHORUS SACKI

Key for Table:

No. = Number of Specimens

SD = Standard Deviation

SE = Standard Error

C/V = Coefficient of Variation

POPULATION	No.	Range	Mean	SD	SE	C/V
<i>sacki sacki</i>						

Entire Sample	106	88-105	96.3	4.16	0.40	3.92
Puebla: Tehuitzingo	22	88-103	95.1	4.18	0.89	4.39
Guerrero: Chilpancingo	23	90-105	95.8	3.86	0.80	4.02
Guerrero: Mexcala	22	90-102	96.5	3.56	0.76	3.69
Morelos	39	89-105	97.2	4.56	0.73	4.69
<i>sacki zweifeli</i>						
Entire Sample	191	91-117	106.2	5.98	0.43	3.13
Michoacán: Tafetan	21	91-116	101.4	8.04	1.75	7.92
Michoacán: Apatzingán	170	95-117	106.8	5.42	1.32	3.19
<i>sacki occidentalis</i> [A]						
	62	97-118	106.3	4.72	0.60	7.61

[\[A\]](#) Data for *C. sacki occidentalis* in Tables 1-3 are from Zweifel (1959, Bull. Amer. Mus. Nat. Hist., 117: tables 1-3).

TABLE 2.—VARIATION IN THE NUMBER OF FEMORAL PORES
IN THREE SUBSPECIES OF CNEMIDOPHORUS SACKI

Key for Table:

No. = Number of Specimens

SD = Standard Deviation

SE = Standard Error

C/V = Coefficient of Variation

POPULATION	No.	Range	Mean	SD	SE	C/V
<i>sacki sacki</i>						
Entire Sample	106	32-44	36.2	2.42	0.25	2.28
Puebla: Tehuitzingo	22	33-41	36.7	2.36	0.50	6.43
Guerrero: Chilpancingo	23	32-39	35.7	2.15	0.45	6.02
Guerrero: Mexcala	22	33-44	37.5	2.59	0.55	6.91
Morelos	39	32-40	35.4	2.19	0.35	6.18
<i>sacki zweifeli</i>						
Entire Sample	189	32-49	41.1	2.77	0.20	1.46
Michoacán: Tafetan	19	33-43	38.1	2.61	0.60	6.85
Michoacán: Apatzingán	170	2-49	41.4	2.58	0.62	1.52
<i>sacki occidentalis</i>	67	32-45	38.8	2.46	0.30	3.67

TABLE 3.—RATIO OF NUMBER OF GRANULES SEPARATING PARAVERTEBRAL STRIPES TO GRANULES AROUND MIDBODY (PV/GAB) IN THREE SUBSPECIES OF CNEMIDOPHORUS SACKI

Key for Table:

No. = Number of Specimens

SD = Standard Deviation

SE = Standard Error

C/V = Coefficient of Variation

POPULATION	No.	Range	Mean	SD	SE	C/V
<i>sacki sacki</i>						
Entire Sample	72	0.101-0.205	0.154	0.052	0.006	0.073
Puebla: Tehuiztingo	12	0.140-0.205	0.169	0.052	0.015	0.433
Guerrero: Chilpancingo	16	0.120-0.192	0.157	0.021	0.005	0.131
Guerrero: Mexcala	21	0.142-0.180	0.159	0.031	0.007	0.147
Morelos	23	0.101-0.180	0.137	0.023	0.005	0.100
<i>sacki zweifeli</i>						
Entire Sample	105	0.064-0.157	0.097	0.070	0.007	0.067
Michoacán: Tafetan	21	0.103-0.157	0.128	0.039	0.009	0.186
Michoacán: Apatzingán	84	0.064-0.126	0.089	0.051	0.005	0.060
<i>sacki occidentalis</i>	50	0.086-0.183	0.130	0.021	0.003	0.042

From the geographically adjacent populations of *sacki* (*sacki* and *occidentalis*), *zweifeli* differs in coloration and scutellation (see

Tables I-III). *Cnemidophorus sacki sacki* has a dorsal pattern in adult males of dark brown cross-bars on a tan ground-color. Both *occidentalis* and *zweifeli* have variable, diffuse color patterns in large adults, but *zweifeli* differs from *occidentalis* in having a blue spot on the pink throat.

Ecology.—In the arid Tepalcatepec Valley *Cnemidophorus sacki zweifeli* lives at elevations of 160 to 1300 meters. In the lower parts of the valley the lizards live primarily in open scrub forests, characterized by deciduous trees offering only partial shade from the sun, especially during the prolonged dry season. Common trees in this scrub forest are *Acacia cymbispina*, *Cercidium plurifoliolatum*, *Mimosa distachya*, and *Prosopis juliflora*.

During the dry season (November through May) adult males apparently aestivate; several large series collected in the winter include only subadults and females. This absence of males is corroborated by personal observations in the Tepalcatepec Valley in April and May. In the summer rainy season the lizards are active in the morning and again in the late afternoon; only *Cnemidophorus calidipes* is active during the heat of the midday. In some [597] areas of the scrub forest *Cnemidophorus sacki zweifeli* is found in association with *Cnemidophorus communis communis*. Throughout the scrub forest *C. sacki zweifeli* occurs with *C. deppei infernalis*. In some of the more dense scrub forest, where *C. sacki zweifeli* is not so abundant as in the more open forest, it has been taken with *C. lineatissimus exoristus*. In the open *Acacia-Cercidium* associations on the valley floor *C. sacki zweifeli* occurs with *C. calidipes*.

This subspecies is not restricted to the scrub forest. On the lower slopes of the Cordillera Volcanica in Michoacán *C. sacki zweifeli* has been collected in open pine-oak forest near Zirimicuaro and Ziracuaretiro.

Distribution.—*Cnemidophorus sacki zweifeli* inhabits the valley of the Río Tepalcatepec in Michoacán and probably extreme southwestern Jalisco, and the western part of the Balsas Basin in Michoacán. No specimens have been seen from extreme western Guerrero, but *C. s. zweifeli* may occur there.

Specimens examined.—Catalogue numbers are preceded by abbreviations of the name of the institution as listed in the acknowledgements.

Cnemidophorus sacki occidentalis, 22 specimens, as follows: *Jalisco*: 8 km. E of Ameca, UMMZ 102045; 7 km. SE of Ameca, UMMZ 102046; Autlán, UMMZ 102044, 102219-21; 7 km. ESE of El Arenal, UMMZ 114736 (2); San Gabriel, UMMZ 102040, 102042-3. *Michoacán*: 2 km. ESE of Jiquilpan, UMMZ 117557 (3). *Nayarit*: Ixtlán del Río, UMMZ 104747; San José de la Conde, UMMZ 102047 (4); 5 km. N of Santa Isabel, UMMZ 102048-50.

Cnemidophorus sacki sacki, 108 specimens, as follows: *Guerrero*: Chilpancingo, UMMZ 72426 (8), 73937 (7), 88422 (4); 8 km. W of Chilpancingo, UMMZ 119144 (4); 5 km. N of Iguala, UMMZ 114712 (11); 15 km. N of Iguala, UMMZ 99039; Mexcala, UMMZ 114711 (10); 8 km. S of Taxco, UMMZ 114709 (2). *Morelos*: Amacuzac, UMMZ 114716; 3 km. S of Cuautla, UMMZ 99031 (9), 99917 (11); Río Cuautla, UMMZ 99038 (6); 5 km. S of Temixco, UMMZ 114718

(12); *Puebla*: 5 km. SE of Izúcar de Matamoros, UMMZ 112650 (4); 13 km. SE of Izúcar de Matamoros, UMMZ 117497 (2); 3 km. NW of Tehuiztingo, UMMZ 114714 (10); 1 km. N of Teyuca, UMMZ 114713 (6).

Cnemidophorus sacki zweifeli, 207 specimens, as follows: *Michoacán*: Apatzingán, CNHM 36966-8, 38969, 38971 (18), 38972 (50), UIMNH 36772-7, USNM 135967-8, 135970, 135972-3; 4 km. E of Apatzingán, UMMZ 85412; 6.5 km. E of Apatzingán, UMMZ 114731 (5); 5 km. W of Apatzingán, KU 29289-90, 29293-7; 10 km. W of Apatzingán, UMMZ 114730 (4); 12.3 km. S of Apatzingán, UMMZ 112647; 16 km. S of Apatzingán, KU 29298; 14 km. SSW of Apatzingán, KU 29735, 29746, 29750-2; 10 km. W of Buenavista, UMMZ 114719 (3); Capirio, UMMZ 112643, 114722 (2), 114733, 119536-50; 4 km. N of Capirio, UMMZ 112644 (3), 112645; 5.6 km. N of Capirio, UMMZ 114732; 2 km. S of Charapendo, UMMZ 112639 (12); Chinapa, UMMZ 119556 (2); Jazmin, UMMZ 114725 (2); between La Playa and Volcán Jorullo, UMMZ 104748 (2); Limoncito, UMMZ 119552 (3); 14 km. S of Lombardia, KU 29299-301, 29303, 29305-11; 6 km. SW of Nueva Italia, UMMZ 112640 (2); 2.7 km. S of Nueva Italia, UMMZ 112641 (4); 5 km. N of Nueva Italia, UMMZ 114721; Río Marquez, 10 km. S of Lombardia, UMMZ 112642, 112646; Río Marquez, 13 km. SE of Nueva ^[598]Italia, UMMZ 114726; 6 km. N of Tafetan, UMMZ 119555 (18); 14.5 km. E of Tepalcatepec, UMMZ 114720 (2); 6 km. S of Tzitzio, UMMZ 99199, 99200 (2); 19 km. S of Tzitzio, UMMZ 99154; Volcán Jorullo, UMMZ 104449 (4), 104750; Ziracuaretiro, UMMZ 114724; 3 km. NW of Zirimicuaro, UMMZ 114723.

Acknowledgments.—For the loan of specimens under their care I am indebted to Doris M. Cochran, United States National Museum (USNM); Norman Hartweg, University of Michigan Museum of Zoology (UMMZ); Robert F. Inger, Chicago Natural History Museum (CNHM); and Hobart M. Smith, University of Illinois Museum of Natural History (UIMNH). I thank Ann S. Duellman, Richard E. Etheridge, Fred G. Thompson, Jerome B. Tulecke, and John Wellman for their assistance in the field, Lorna Cordonnier for the drawing reproduced as Figure 1, and Richard G. Zweifel for helpful suggestions and criticism. Field work in México was made possible by grants from the Penrose Fund of the American Philosophical Society and the Bache Fund of the National Academy of Sciences in co-operation with the Museum of Zoology of the University of Michigan.

Transmitted February 2, 1960.



*** END OF THE PROJECT GUTENBERG EBOOK A NEW SUBSPECIES OF LIZARD, CNEMIDOPHORUS SACKI,
FROM MICHOACÁN, MÉXICO ***

Updated editions will replace the previous one—the old editions will be renamed.

Creating the works from print editions not protected by U.S. copyright law means that no one owns a United States copyright in these works, so the Foundation (and you!) can copy and distribute it in the United States without permission and without paying copyright royalties. Special rules, set forth in the General Terms of Use part of this license, apply to copying and distributing Project Gutenberg™ electronic works to protect the PROJECT GUTENBERG™ concept and trademark. Project Gutenberg is a registered trademark, and may not be used if you charge for an eBook, except by following the terms of the trademark license, including paying royalties for use of the Project Gutenberg trademark. If you do not charge anything for copies of this eBook, complying with the trademark license is very easy. You may use this eBook for nearly any purpose such as creation of derivative works, reports, performances and research. Project Gutenberg eBooks may be modified and printed and given away—you may do practically ANYTHING in the United States with eBooks not protected by U.S. copyright law. Redistribution is subject to the trademark license, especially commercial redistribution.

START: FULL LICENSE

THE FULL PROJECT GUTENBERG LICENSE PLEASE READ THIS BEFORE YOU DISTRIBUTE OR USE THIS WORK

To protect the Project Gutenberg™ mission of promoting the free distribution of electronic works, by using or distributing this work (or any other work associated in any way with the phrase “Project Gutenberg”), you agree to comply with all the terms of the Full Project Gutenberg™ License available with this file or online at www.gutenberg.org/license.

Section 1. General Terms of Use and Redistributing Project Gutenberg™ electronic works

1.A. By reading or using any part of this Project Gutenberg™ electronic work, you indicate that you have read, understand, agree to and accept all the terms of this license and intellectual property (trademark/copyright) agreement. If you do not agree to abide by all the terms of this agreement, you must cease using and return or destroy all copies of Project Gutenberg™ electronic works in your possession. If you paid a fee for obtaining a copy of or access to a Project Gutenberg™ electronic work and you do not agree to be bound by the terms of this agreement, you may obtain a refund from the person or entity to whom you paid the fee as set forth in paragraph 1.E.8.

1.B. “Project Gutenberg” is a registered trademark. It may only be used on or associated in any way with an electronic work by people who agree to be bound by the terms of this agreement. There are a few things that you can do with most Project Gutenberg™ electronic works even without complying with the full terms of this agreement. See paragraph 1.C below. There are a lot of things you can do with Project

Gutenberg™ electronic works if you follow the terms of this agreement and help preserve free future access to Project Gutenberg™ electronic works. See paragraph 1.E below.

1.C. The Project Gutenberg Literary Archive Foundation (“the Foundation” or PGLAF), owns a compilation copyright in the collection of Project Gutenberg™ electronic works. Nearly all the individual works in the collection are in the public domain in the United States. If an individual work is unprotected by copyright law in the United States and you are located in the United States, we do not claim a right to prevent you from copying, distributing, performing, displaying or creating derivative works based on the work as long as all references to Project Gutenberg are removed. Of course, we hope that you will support the Project Gutenberg™ mission of promoting free access to electronic works by freely sharing Project Gutenberg™ works in compliance with the terms of this agreement for keeping the Project Gutenberg™ name associated with the work. You can easily comply with the terms of this agreement by keeping this work in the same format with its attached full Project Gutenberg™ License when you share it without charge with others.

1.D. The copyright laws of the place where you are located also govern what you can do with this work. Copyright laws in most countries are in a constant state of change. If you are outside the United States, check the laws of your country in addition to the terms of this agreement before downloading, copying, displaying, performing, distributing or creating derivative works based on this work or any other Project Gutenberg™ work. The Foundation makes no representations concerning the copyright status of any work in any country other than the United States.

1.E. Unless you have removed all references to Project Gutenberg:

1.E.1. The following sentence, with active links to, or other immediate access to, the full Project Gutenberg™ License must appear prominently whenever any copy of a Project Gutenberg™ work (any work on which the phrase “Project Gutenberg” appears, or with which the phrase “Project Gutenberg” is associated) is accessed, displayed, performed, viewed, copied or distributed:

This eBook is for the use of anyone anywhere in the United States and most other parts of the world at no cost and with almost no restrictions whatsoever. You may copy it, give it away or re-use it under the terms of the Project Gutenberg License included with this eBook or online at www.gutenberg.org. If you are not located in the United States, you will have to check the laws of the country where you are located before using this eBook.

1.E.2. If an individual Project Gutenberg™ electronic work is derived from texts not protected by U.S. copyright law (does not contain a notice indicating that it is posted with permission of the copyright holder), the work can be copied and distributed to anyone in the United States without paying any fees or charges. If you are redistributing or providing access to a work with the phrase “Project Gutenberg” associated with or appearing on the work, you must comply either with the requirements of paragraphs 1.E.1 through 1.E.7 or obtain permission for the use of the work and the Project Gutenberg™ trademark as set forth in paragraphs 1.E.8 or 1.E.9.

1.E.3. If an individual Project Gutenberg™ electronic work is posted with the permission of the copyright holder, your use and distribution must comply with both paragraphs 1.E.1 through 1.E.7 and any additional terms imposed by the copyright holder. Additional terms will be linked to the Project

Gutenberg™ License for all works posted with the permission of the copyright holder found at the beginning of this work.

1.E.4. Do not unlink or detach or remove the full Project Gutenberg™ License terms from this work, or any files containing a part of this work or any other work associated with Project Gutenberg™.

1.E.5. Do not copy, display, perform, distribute or redistribute this electronic work, or any part of this electronic work, without prominently displaying the sentence set forth in paragraph 1.E.1 with active links or immediate access to the full terms of the Project Gutenberg™ License.

1.E.6. You may convert to and distribute this work in any binary, compressed, marked up, nonproprietary or proprietary form, including any word processing or hypertext form. However, if you provide access to or distribute copies of a Project Gutenberg™ work in a format other than “Plain Vanilla ASCII” or other format used in the official version posted on the official Project Gutenberg™ website (www.gutenberg.org), you must, at no additional cost, fee or expense to the user, provide a copy, a means of exporting a copy, or a means of obtaining a copy upon request, of the work in its original “Plain Vanilla ASCII” or other form. Any alternate format must include the full Project Gutenberg™ License as specified in paragraph 1.E.1.

1.E.7. Do not charge a fee for access to, viewing, displaying, performing, copying or distributing any Project Gutenberg™ works unless you comply with paragraph 1.E.8 or 1.E.9.

1.E.8. You may charge a reasonable fee for copies of or providing access to or distributing Project Gutenberg™ electronic works provided that:

- • You pay a royalty fee of 20% of the gross profits you derive from the use of Project Gutenberg™ works calculated using the method you already use to calculate your applicable taxes. The fee is owed to the owner of the Project Gutenberg™ trademark, but he has agreed to donate royalties under this paragraph to the Project Gutenberg Literary Archive Foundation. Royalty payments must be paid within 60 days following each date on which you prepare (or are legally required to prepare) your periodic tax returns. Royalty payments should be clearly marked as such and sent to the Project Gutenberg Literary Archive Foundation at the address specified in Section 4, “Information about donations to the Project Gutenberg Literary Archive Foundation.”
- • You provide a full refund of any money paid by a user who notifies you in writing (or by e-mail) within 30 days of receipt that s/he does not agree to the terms of the full Project Gutenberg™ License. You must require such a user to return or destroy all copies of the works possessed in a physical medium and discontinue all use of and all access to other copies of Project Gutenberg™ works.
- • You provide, in accordance with paragraph 1.F.3, a full refund of any money paid for a work or a replacement copy, if a defect in the electronic work is discovered and reported to you within 90 days of receipt of the work.
- • You comply with all other terms of this agreement for free distribution of Project Gutenberg™ works.

1.E.9. If you wish to charge a fee or distribute a Project Gutenberg™ electronic work or group of works on different terms than are set forth in this agreement, you must obtain permission in writing from the

Project Gutenberg Literary Archive Foundation, the manager of the Project Gutenberg™ trademark. Contact the Foundation as set forth in Section 3 below.

1.F.

1.F.1. Project Gutenberg volunteers and employees expend considerable effort to identify, do copyright research on, transcribe and proofread works not protected by U.S. copyright law in creating the Project Gutenberg™ collection. Despite these efforts, Project Gutenberg™ electronic works, and the medium on which they may be stored, may contain “Defects,” such as, but not limited to, incomplete, inaccurate or corrupt data, transcription errors, a copyright or other intellectual property infringement, a defective or damaged disk or other medium, a computer virus, or computer codes that damage or cannot be read by your equipment.

1.F.2. LIMITED WARRANTY, DISCLAIMER OF DAMAGES - Except for the “Right of Replacement or Refund” described in paragraph 1.F.3, the Project Gutenberg Literary Archive Foundation, the owner of the Project Gutenberg™ trademark, and any other party distributing a Project Gutenberg™ electronic work under this agreement, disclaim all liability to you for damages, costs and expenses, including legal fees. YOU AGREE THAT YOU HAVE NO REMEDIES FOR NEGLIGENCE, STRICT LIABILITY, BREACH OF WARRANTY OR BREACH OF CONTRACT EXCEPT THOSE PROVIDED IN PARAGRAPH 1.F.3. YOU AGREE THAT THE FOUNDATION, THE TRADEMARK OWNER, AND ANY DISTRIBUTOR UNDER THIS AGREEMENT WILL NOT BE LIABLE TO YOU FOR ACTUAL, DIRECT, INDIRECT, CONSEQUENTIAL, PUNITIVE OR INCIDENTAL DAMAGES EVEN IF YOU GIVE NOTICE OF THE POSSIBILITY OF SUCH DAMAGE.

1.F.3. LIMITED RIGHT OF REPLACEMENT OR REFUND - If you discover a defect in this electronic work within 90 days of receiving it, you can receive a refund of the money (if any) you paid for it by sending a written explanation to the person you received the work from. If you received the work on a physical medium, you must return the medium with your written explanation. The person or entity that provided you with the defective work may elect to provide a replacement copy in lieu of a refund. If you received the work electronically, the person or entity providing it to you may choose to give you a second opportunity to receive the work electronically in lieu of a refund. If the second copy is also defective, you may demand a refund in writing without further opportunities to fix the problem.

1.F.4. Except for the limited right of replacement or refund set forth in paragraph 1.F.3, this work is provided to you ‘AS-IS’, WITH NO OTHER WARRANTIES OF ANY KIND, EXPRESS OR IMPLIED, INCLUDING BUT NOT LIMITED TO WARRANTIES OF MERCHANTABILITY OR FITNESS FOR ANY PURPOSE.

1.F.5. Some states do not allow disclaimers of certain implied warranties or the exclusion or limitation of certain types of damages. If any disclaimer or limitation set forth in this agreement violates the law of the state applicable to this agreement, the agreement shall be interpreted to make the maximum disclaimer or limitation permitted by the applicable state law. The invalidity or unenforceability of any provision of this agreement shall not void the remaining provisions.

1.F.6. INDEMNITY - You agree to indemnify and hold the Foundation, the trademark owner, any agent or employee of the Foundation, anyone providing copies of Project Gutenberg™ electronic works in accordance with this agreement, and any volunteers associated with the production, promotion and distribution of Project Gutenberg™ electronic works, harmless from all liability, costs and expenses, including legal fees, that arise directly or indirectly from any of the following which you do or cause to

occur: (a) distribution of this or any Project Gutenberg™ work, (b) alteration, modification, or additions or deletions to any Project Gutenberg™ work, and (c) any Defect you cause.

Section 2. Information about the Mission of Project Gutenberg™

Project Gutenberg™ is synonymous with the free distribution of electronic works in formats readable by the widest variety of computers including obsolete, old, middle-aged and new computers. It exists because of the efforts of hundreds of volunteers and donations from people in all walks of life.

Volunteers and financial support to provide volunteers with the assistance they need are critical to reaching Project Gutenberg™'s goals and ensuring that the Project Gutenberg™ collection will remain freely available for generations to come. In 2001, the Project Gutenberg Literary Archive Foundation was created to provide a secure and permanent future for Project Gutenberg™ and future generations. To learn more about the Project Gutenberg Literary Archive Foundation and how your efforts and donations can help, see Sections 3 and 4 and the Foundation information page at www.gutenberg.org.

Section 3. Information about the Project Gutenberg Literary Archive Foundation

The Project Gutenberg Literary Archive Foundation is a non-profit 501(c)(3) educational corporation organized under the laws of the state of Mississippi and granted tax exempt status by the Internal Revenue Service. The Foundation's EIN or federal tax identification number is 64-6221541. Contributions to the Project Gutenberg Literary Archive Foundation are tax deductible to the full extent permitted by U.S. federal laws and your state's laws.

The Foundation's business office is located at 809 North 1500 West, Salt Lake City, UT 84116, (801) 596-1887. Email contact links and up to date contact information can be found at the Foundation's website and official page at www.gutenberg.org/contact

Section 4. Information about Donations to the Project Gutenberg Literary Archive Foundation

Project Gutenberg™ depends upon and cannot survive without widespread public support and donations to carry out its mission of increasing the number of public domain and licensed works that can be freely distributed in machine-readable form accessible by the widest array of equipment including outdated equipment. Many small donations (\$1 to \$5,000) are particularly important to maintaining tax exempt status with the IRS.

The Foundation is committed to complying with the laws regulating charities and charitable donations in all 50 states of the United States. Compliance requirements are not uniform and it takes a considerable effort, much paperwork and many fees to meet and keep up with these requirements. We do not solicit donations in locations where we have not received written confirmation of compliance. To SEND DONATIONS or determine the status of compliance for any particular state visit www.gutenberg.org/donate.

While we cannot and do not solicit contributions from states where we have not met the solicitation requirements, we know of no prohibition against accepting unsolicited donations from donors in such states who approach us with offers to donate.

International donations are gratefully accepted, but we cannot make any statements concerning tax treatment of donations received from outside the United States. U.S. laws alone swamp our small staff.

Please check the Project Gutenberg web pages for current donation methods and addresses. Donations are accepted in a number of other ways including checks, online payments and credit card donations. To donate, please visit: www.gutenberg.org/donate

Section 5. General Information About Project Gutenberg™ electronic works

Professor Michael S. Hart was the originator of the Project Gutenberg™ concept of a library of electronic works that could be freely shared with anyone. For forty years, he produced and distributed Project Gutenberg™ eBooks with only a loose network of volunteer support.

Project Gutenberg™ eBooks are often created from several printed editions, all of which are confirmed as not protected by copyright in the U.S. unless a copyright notice is included. Thus, we do not necessarily keep eBooks in compliance with any particular paper edition.

Most people start at our website which has the main PG search facility: www.gutenberg.org.

This website includes information about Project Gutenberg™, including how to make donations to the Project Gutenberg Literary Archive Foundation, how to help produce our new eBooks, and how to subscribe to our email newsletter to hear about new eBooks.